

# **Project TIE-Phoon**

Highly Classified

*Concept Fighter – Typhoon Squadron*



**Designed by Phoenix Technologies**

**Sponsored by the Science Office**

V.1.2

UNIVERSITY







**TIEPhoon****Concept Model:** Twin Ion Engine Phoon

- SX-1 - Wings
- SX-2 - Flight
- SX-3 - Spinner
- SX-4 – Spider
- BX-1 – Big Daddy
- BX-2 – Big Momma
- RX-1 – Ballsy
- RX-2 – Firefight
- RX-3 – Firebat
- RX-4 – Cube
- RX-5 – Trippy
- RX-6 – Cyclonic
- RX-7 - Challenger

**Production Information****Manufacturer:**

- Phoenix Technologies – EH Affiliate
- Science Office – Emperor’s Hammer
- Sienar Fleet System – Original TIE Series Design

**Line:** TIE Series**Type:** Starfighter**Cost:** CLASSIFIED**Required Minimal Technical Specifications****Hyperdrive System:** Yes**Shielding:** Yes**Armament:**

- Turbolaser (6)
- Warhead Launchers (1): Min 1 – Max 2

**Technical Limitations**

Gyroscopic S-Foils system Installed on most models – increased maintenance costs.

Cannons must be fired sequentially. Firing a linked blast of the full turbolaser battery will cause a complete electrical system failure necessitating a complete craft reboot mid-flight.

Due storage and power requirements, very restricted warhead space on most models.

UNIVERSITY OF  
SOUTH ALABAMA





**TIEPhoon****Concept Model:** Twin Ion Engine Phoon

- SX-1 – Wings
- SX-2 – Flight
- SX-3 – Spinner
- SX-4 – Spider

**Production Information****Manufacturer:**

- Phoenix Technologies – EH Affiliate
- Science Office – Emperor’s Hammer
- Sienar Fleet System – Original TIE Series Design

**Line:** TIE Series**Type:** Starfighter**Cost:** CLASSIFIED**Technical Specifications****Length:** CLASSIFIED**Width:** CLASSIFIED**Height & Depth:** CLASSIFIED**Gyroscope System\S-Foils:** TBC**Maximum Acceleration:** CLASSIFIED**Engine:**

- SFS P-sz9.7 Quad Ion Engines
- SLAM Overdrive

**Hyperdrive Rating:** Class 2.0**Hyperdrive System:** ND9 Hyperdrive Motivator**Powerplant:** Phoenix Reactor - Class: Origin**Shielding:** YES - CLASSIFIED**Hull:** CLASSIFIED**Armament:**

- Turbolaser (6)
- Ion Cannons (TBC)
- Warhead Launchers (2) – Max Load: 2

**Escape Craft:** Ejector Seat**Crew:** Pilot (1)**Passengers:** None**Cargo Capacity:** 200 Kilograms**Consumables:** 2 weeks**Information:**

-Series Design is based of existing T/A & T/I structure modified to suit operational requirements.

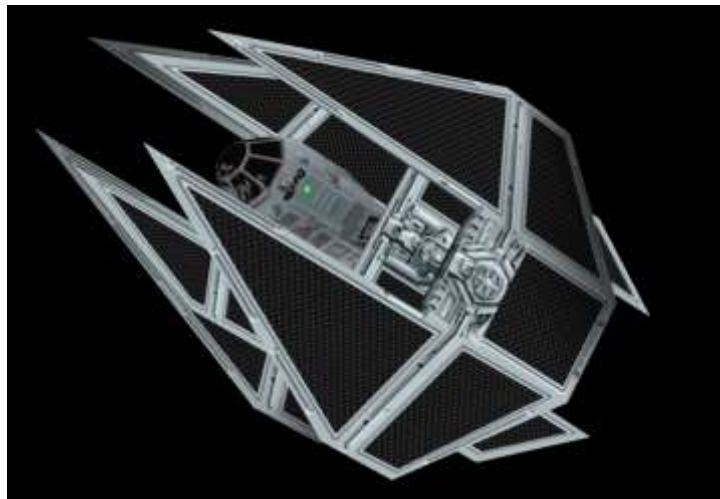
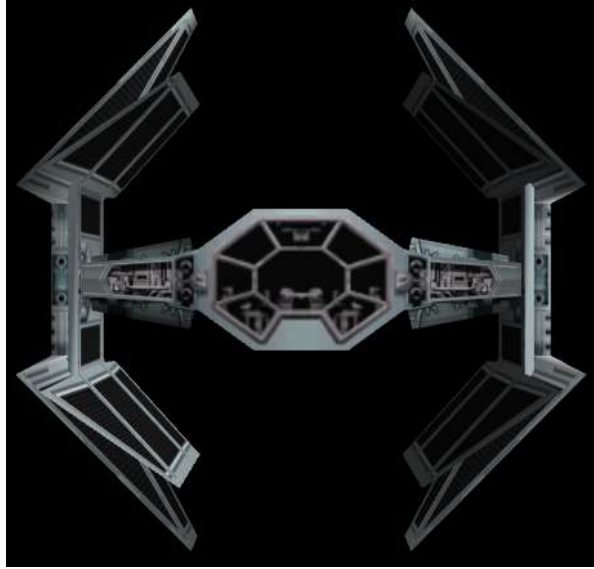
-Reduced construction, manufacturing & maintenance costs.

-Highest rated speed and manoeuvrability aided by gyroscope s-foils system.

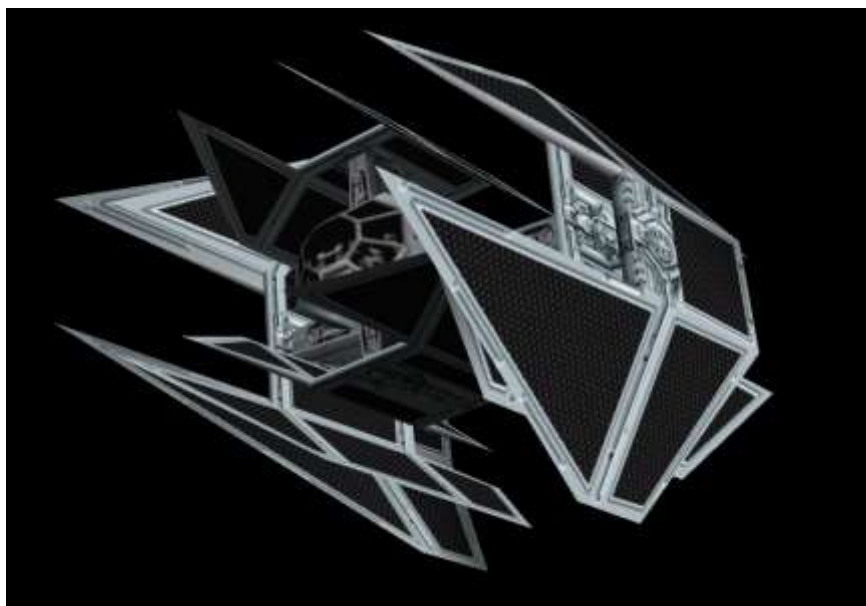
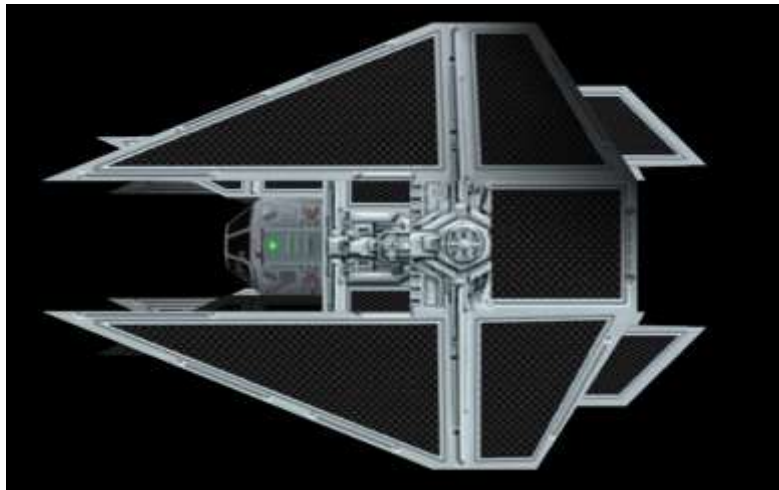
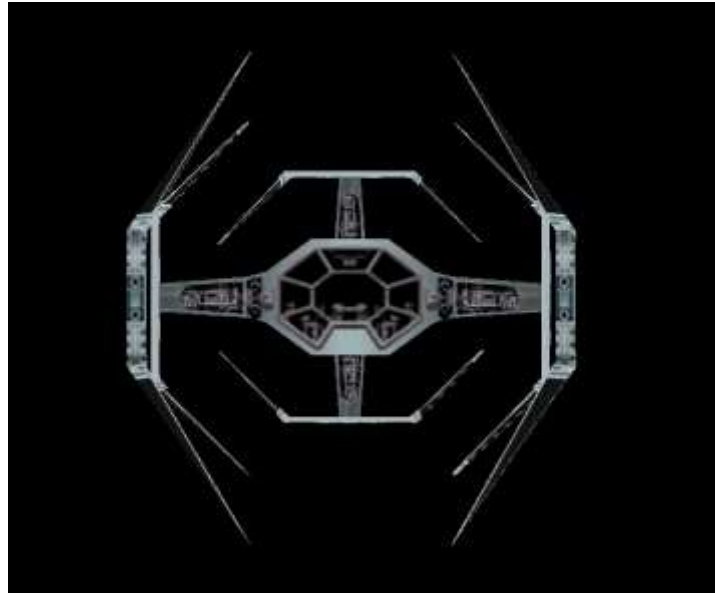
-Increased power generation requirements due to Turbolaser configuration (6).

-Limited warhead space available.

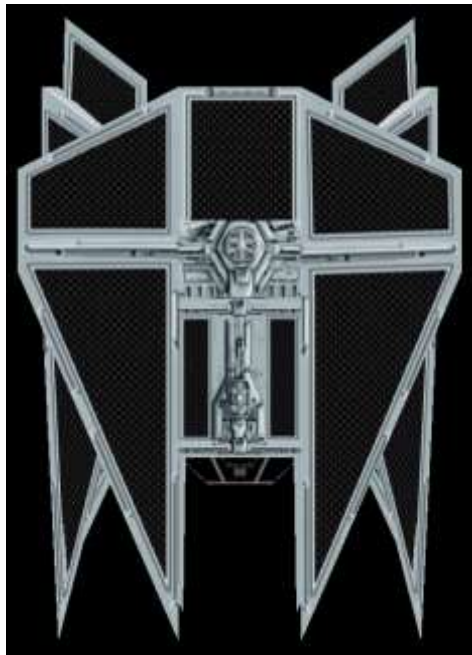
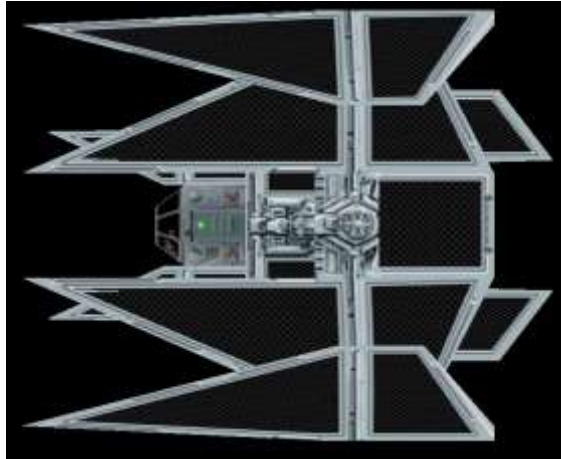
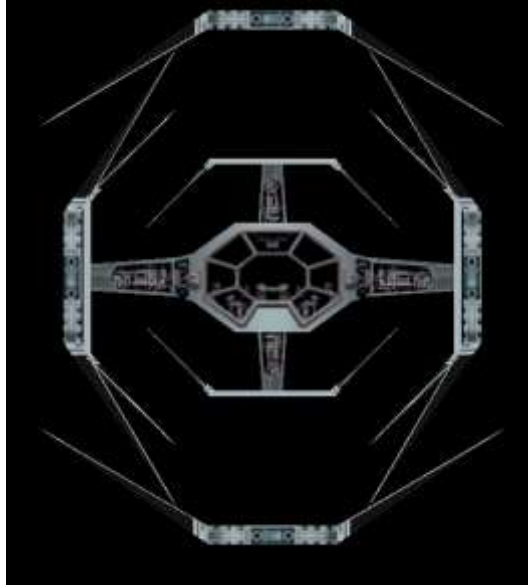
SX-1 – Wings



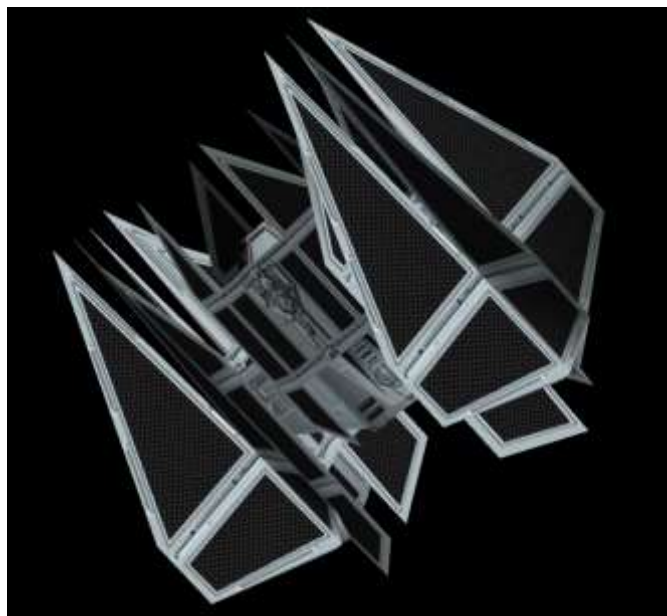
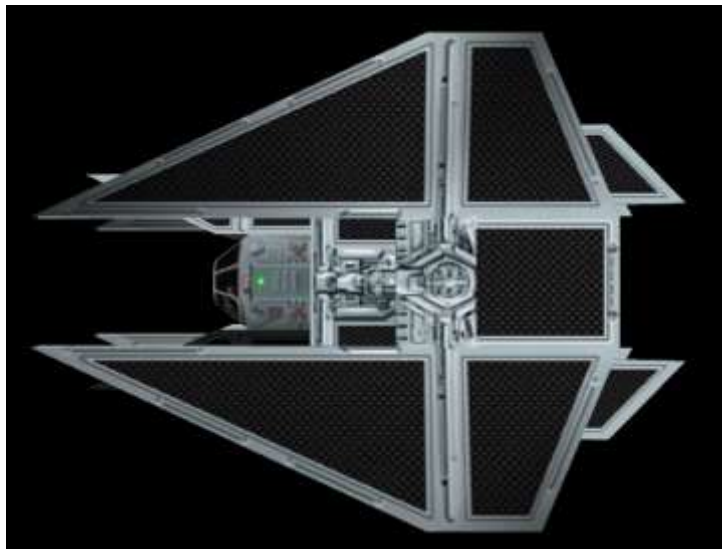
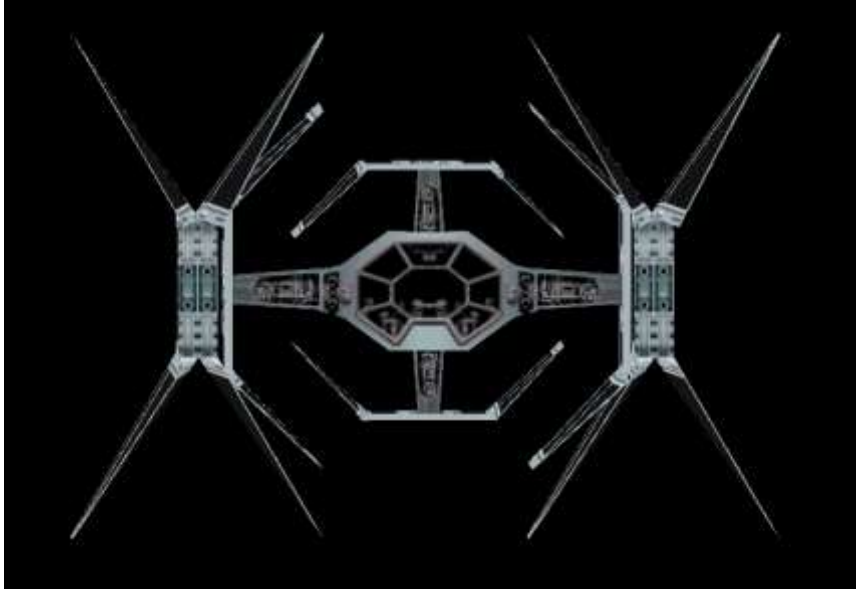
**SX-2 – Flight**



**SX-3 – Spinner**



*SX-4 – Spider*







**Twin Ion Engine Phoon**

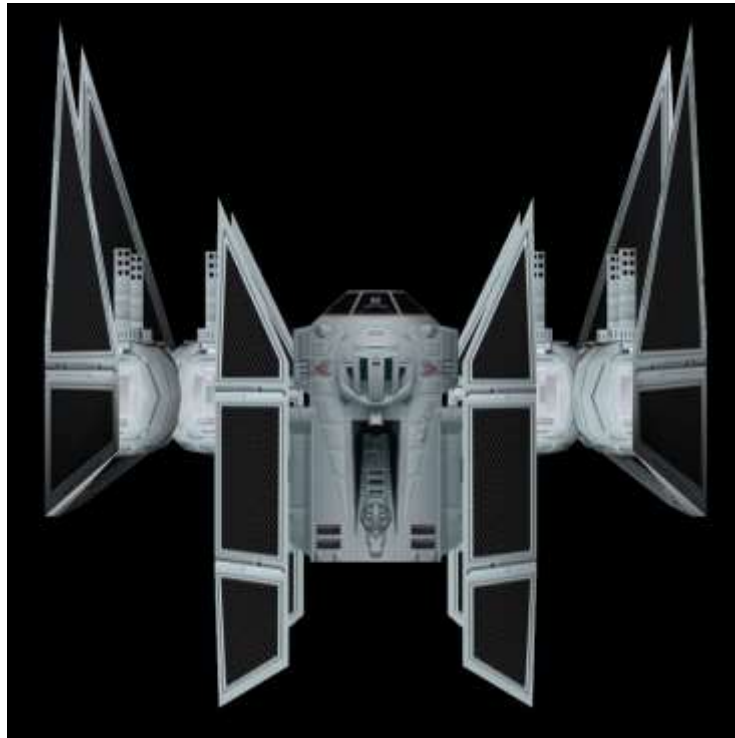
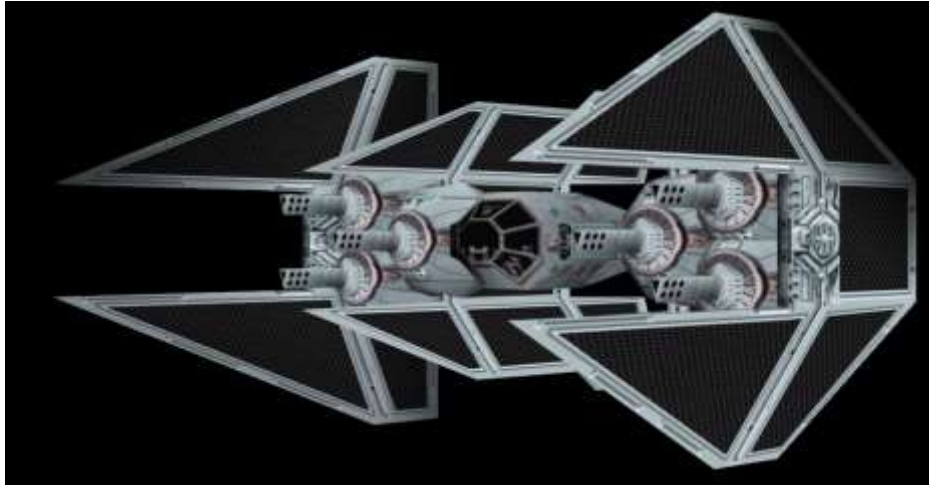
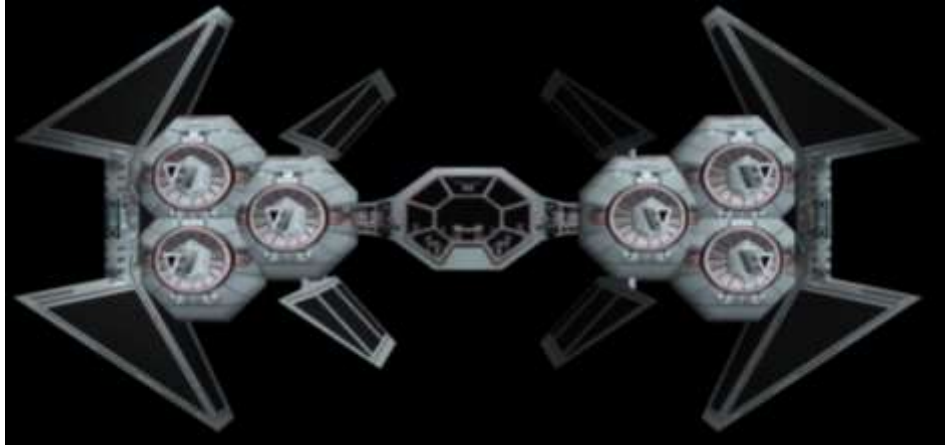
BX-1 – Big Daddy

BX-2 – Big Momma

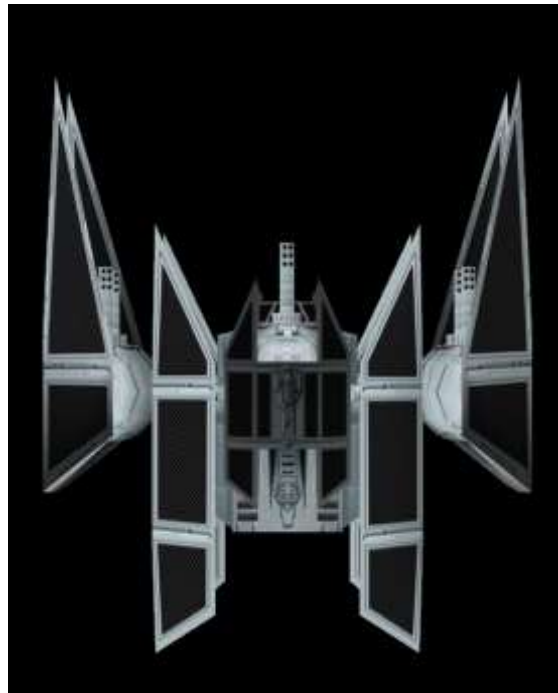
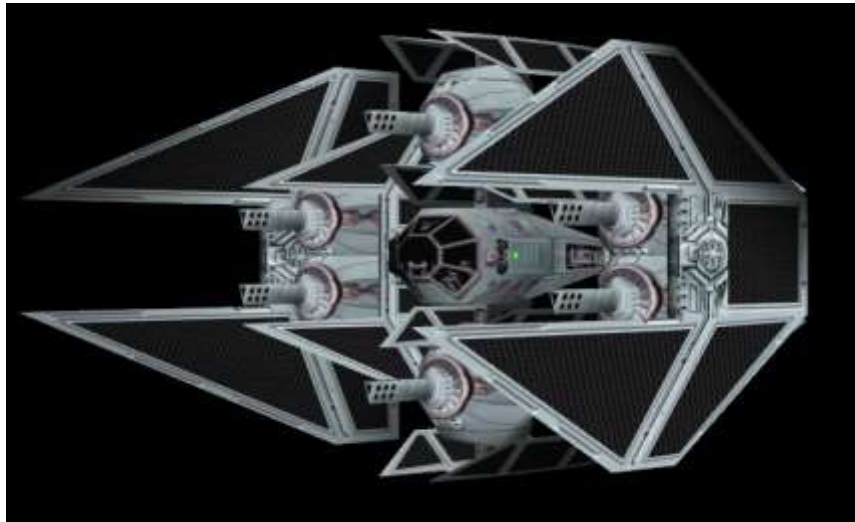
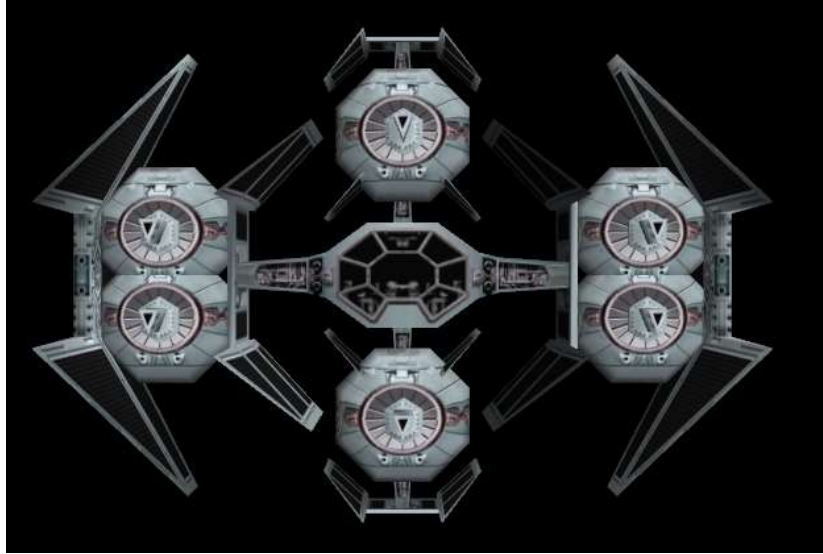




BX-1 – Big Daddy



BX-2 – Big Momma







**TIEPhoon**

**Rejected Concept Model:** Twin Ion Engine Phoon

- RX-1 – Ballsy
- RX-2 – Firefight
- RX-3 – Firebat
- RX-4 – Cube
- RX-5 – Trippy
- RX-6 – Cyclonic
- RX-7 – Challenger

**Production Information**

**Manufacturer:**

- Phoenix Technologies – EH Affiliate
- Science Office – Emperor’s Hammer
- Siemar Fleet System – Original TIE Series Design

**Line:** TIE Series

**Type:** Starfighter

**Cost:** CLASSIFIED

**Technical Specifications**

**Length:** CLASSIFIED

**Width:** CLASSIFIED

**Height & Depth:** CLASSIFIED

**Gyroscope System\S-Foils:** TBC

**Maximum Acceleration:** CLASSIFIED

**Engine:** Concept Specific

**Hyperdrive Rating:** Class 2.0

**Hyperdrive System:** ND9 Hyperdrive Motivator

**Powerplant:** Phoenix Reactor - Class: Origin

**Shielding:** YES - CLASSIFIED

**Hull:** CLASSIFIED

**Armament:**

- Concept Specific

**Escape Craft:** Ejector Seat

**Crew:** Pilot (1)

**Passengers:** None

**Cargo Capacity:** 200 Kilograms

**Consumables:** 2 weeks

**Information:**

-Rejected and unexplored concepts

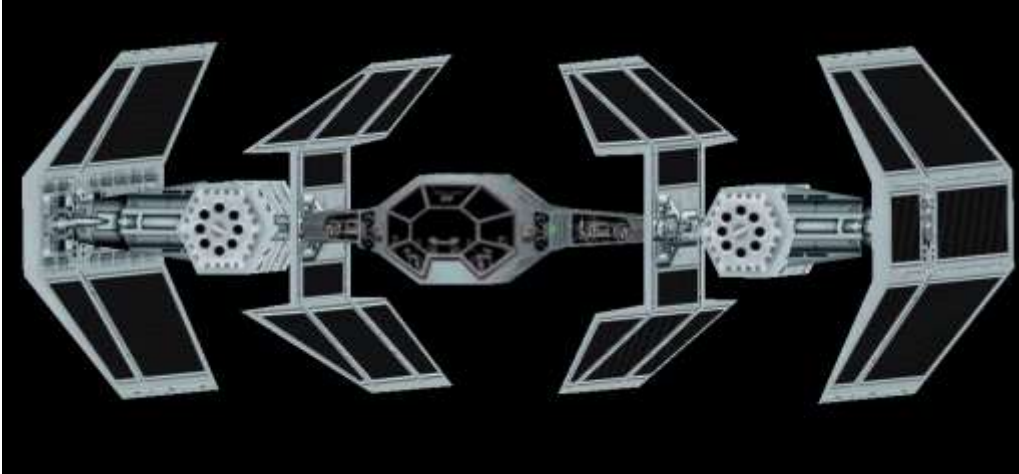
-Future Research possible

-Propose several designs for Project: Obsidian II

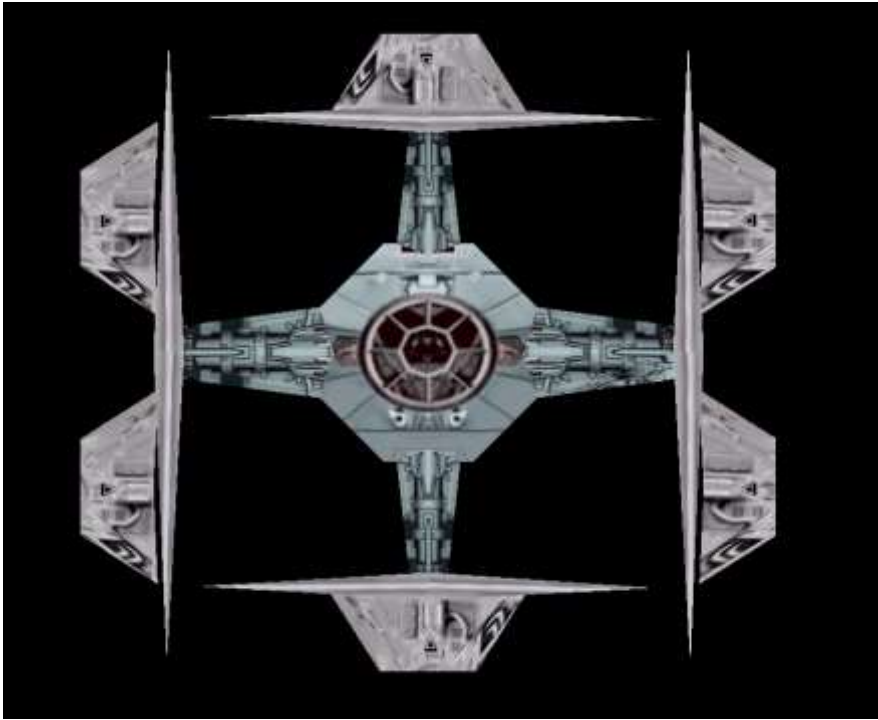
-Demon Squadron Flight Data requested for additional research (EH CLASSIFIED: 753-GGF-896)



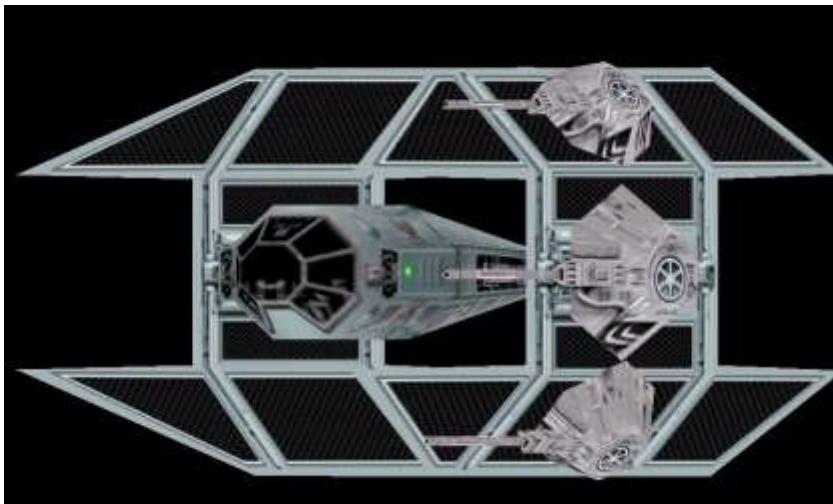
RX-3 – Firebat



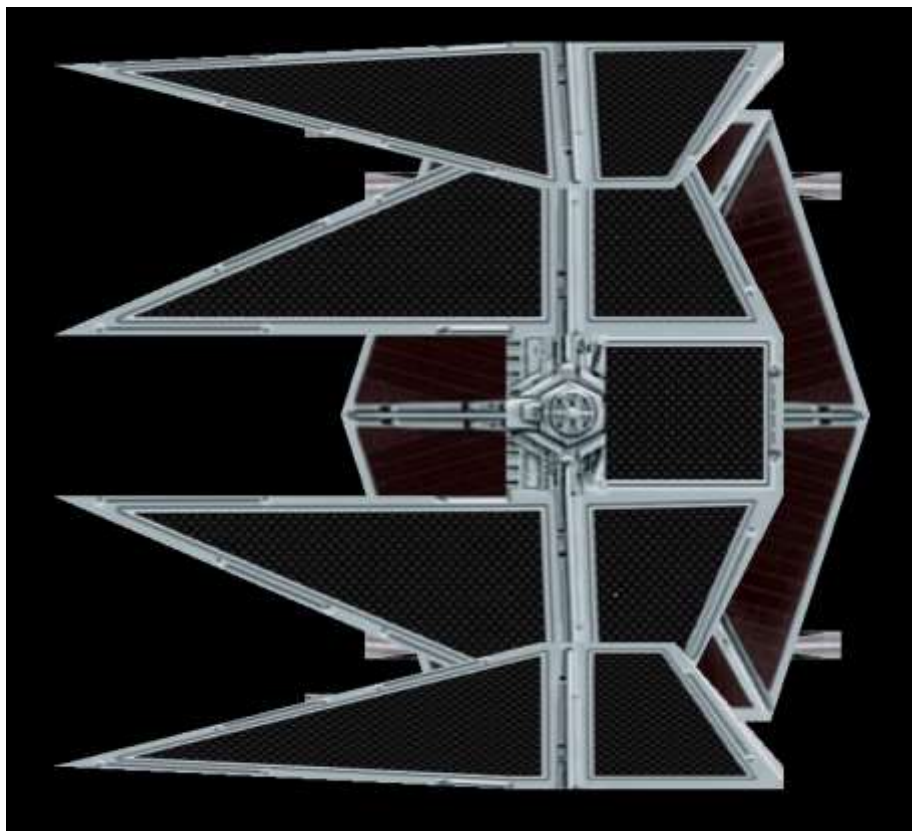
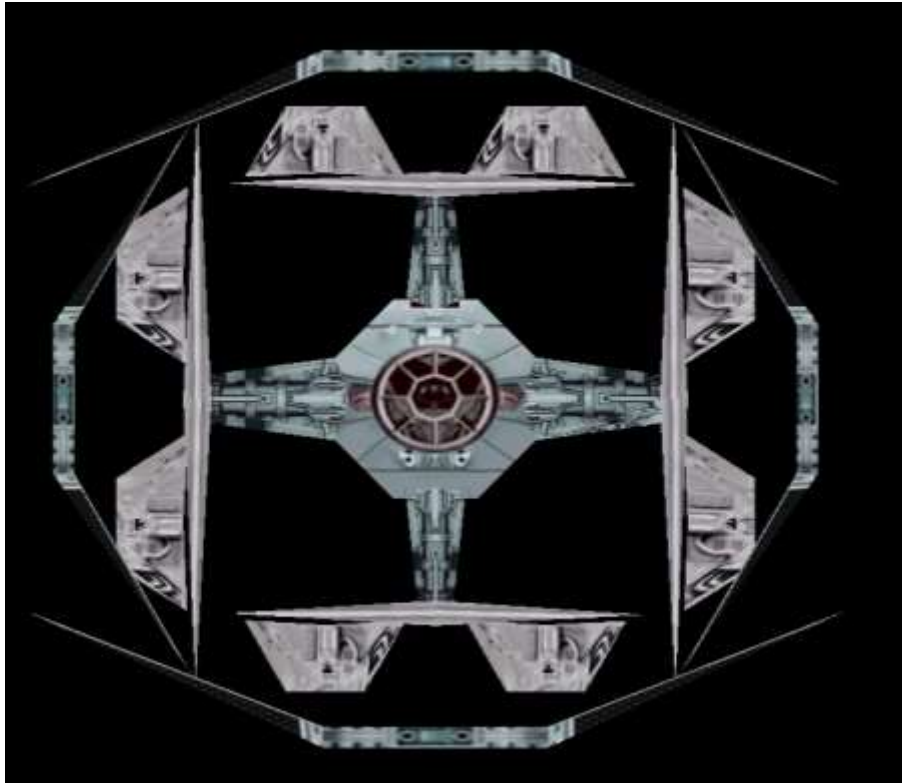
RX-4 – Cube



RX-5 – Trippy

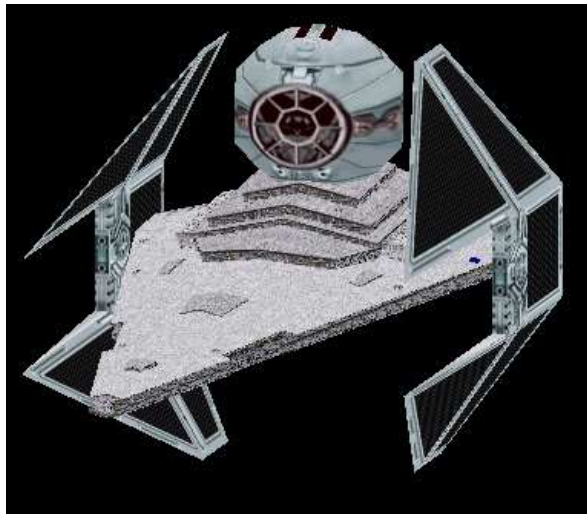
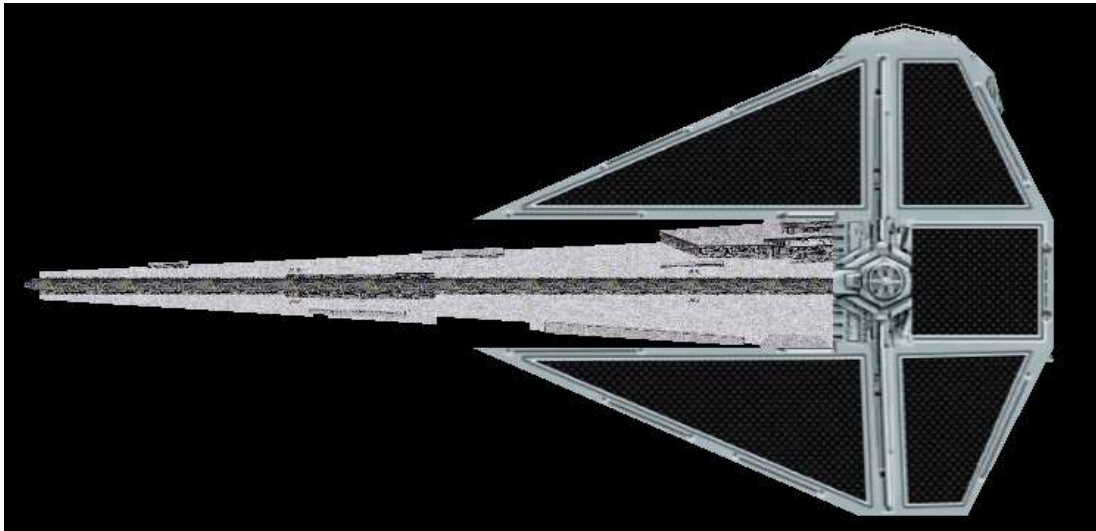
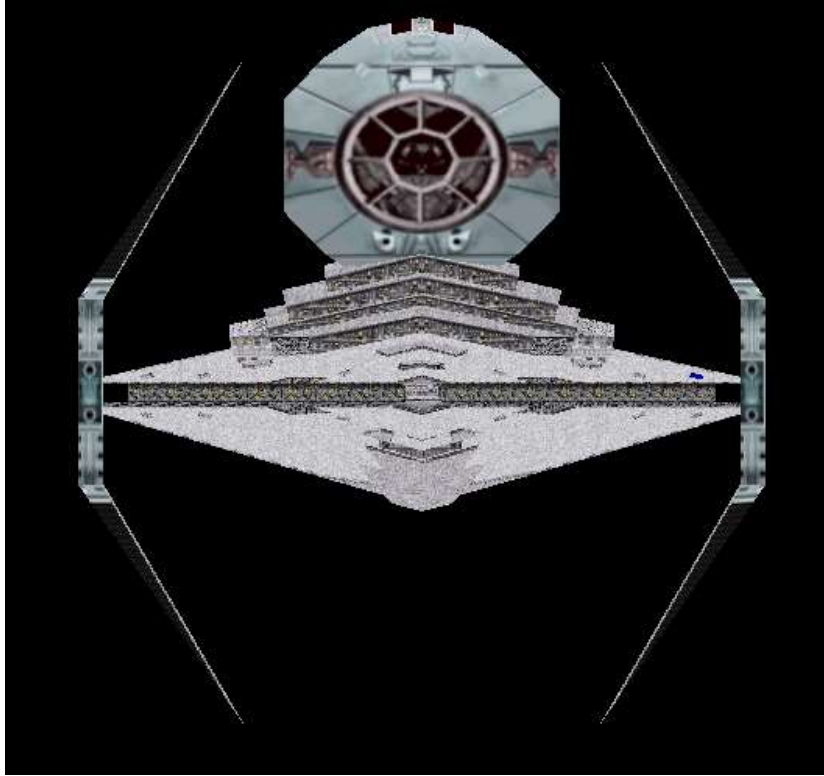


RX-6 – Cyclonic





RX-7 – Challenger



מבוא  
א. המבנה הכללי של המסמך  
ב. המבנה הפנימי של המסמך  
ג. המבנה החיצוני של המסמך  
ד. המבנה המשפטי של המסמך  
ה. המבנה הכלכלי של המסמך  
ו. המבנה הסוציאלי של המסמך  
ז. המבנה התרבותי של המסמך  
ח. המבנה הפוליטי של המסמך  
ט. המבנה הכלכלי של המסמך  
י. המבנה הסוציאלי של המסמך  
יא. המבנה התרבותי של המסמך  
יב. המבנה הפוליטי של המסמך

